

Welcome to  
Swimming Buddies.

This guide will give  
you an insight to  
your journey to the  
pool and some new  
faces you will meet  
along the way.



# ***Our Journey to Swimming Buddies at Brook Leisure Centre***

Let's follow Sammy Seahorse...





Welcome to Brook  
Leisure Centre.



2

This is where we  
enter the building.





We go through the barriers and turn right. The barriers will be open for our Buddies.



4

The barriers will be open for our Buddies.



5

Follow the yellow markings on the floor to guide you to the changing rooms.





Pass through  
these doors.





7

Changing rooms are on the right - please arrive pool ready.





8

My carer can come with me to guide me to the pool entrance.





Lockers available  
for your use.



10

Please wait at the barrier where our poolside team will look after you.



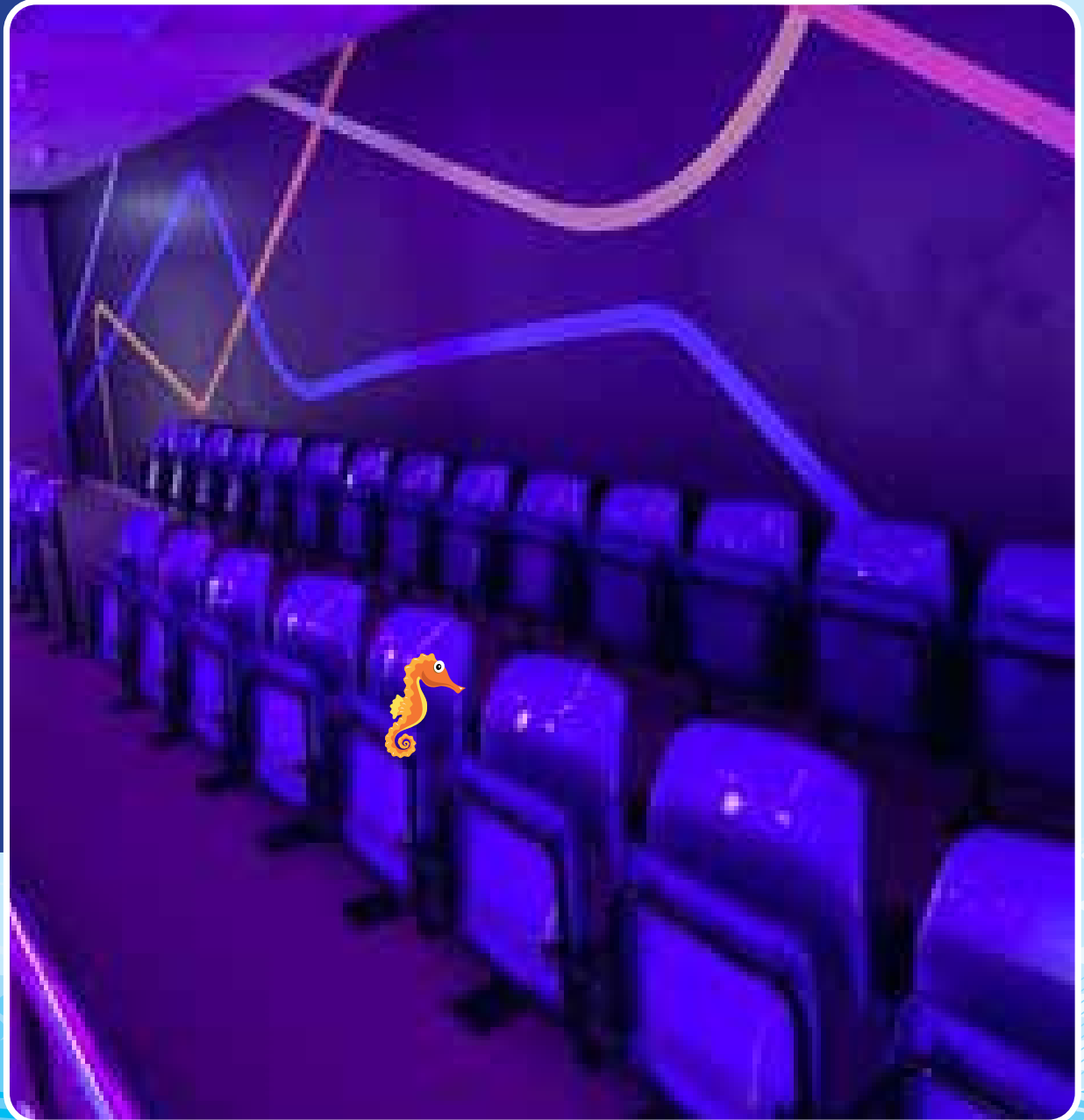


Its nearly  
swimming time!



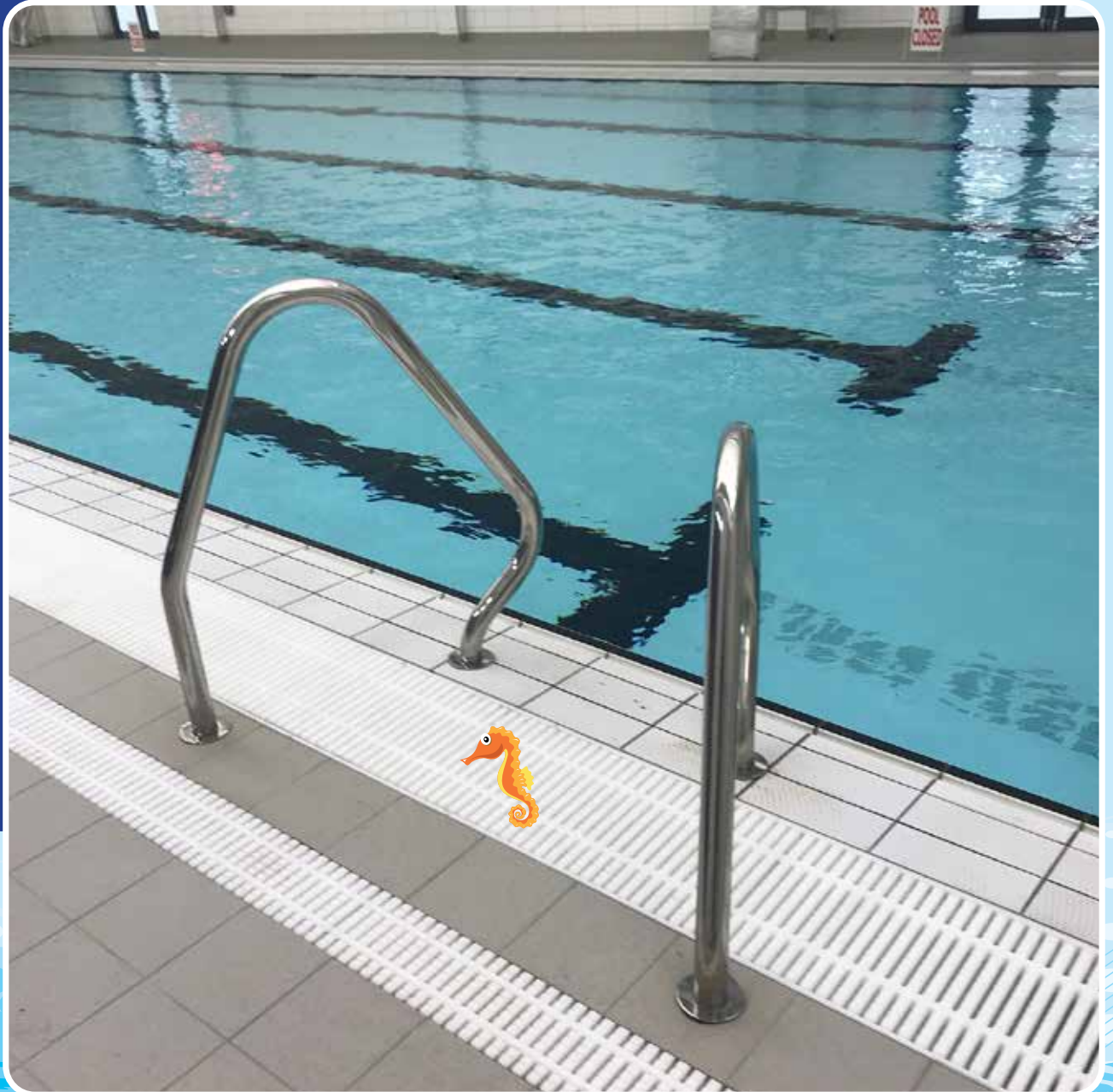
12

Carers can wait  
here while I have  
my session.



13

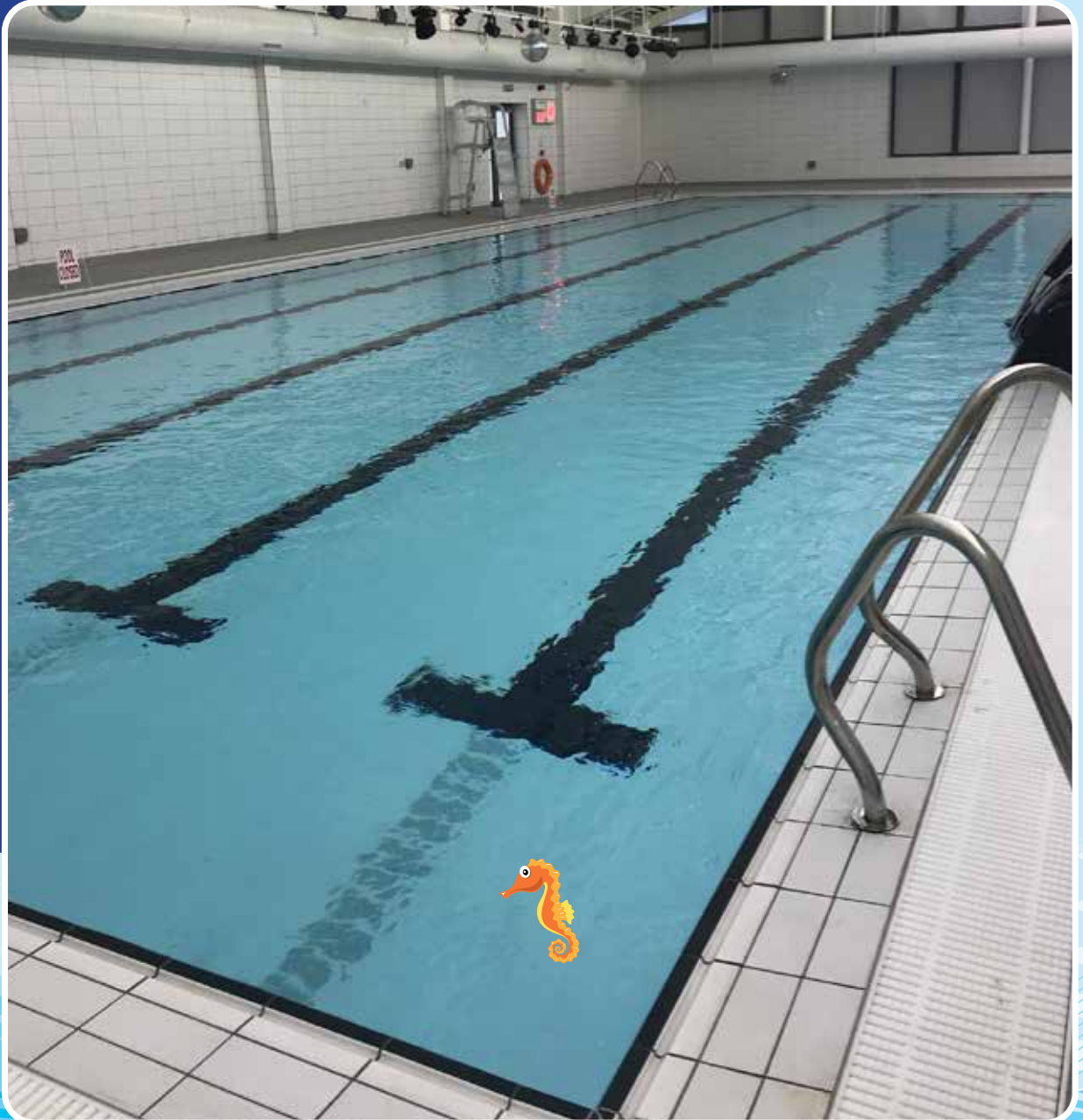
I can safely enter  
the pool here.





14

Our pool is  
25 metres long.





15

Once my session is over, I can have a quick show and then follow the yellow arrows to the exit.



16

Follow the exit  
this way signage.



17

Follow the yellow  
floor markers.



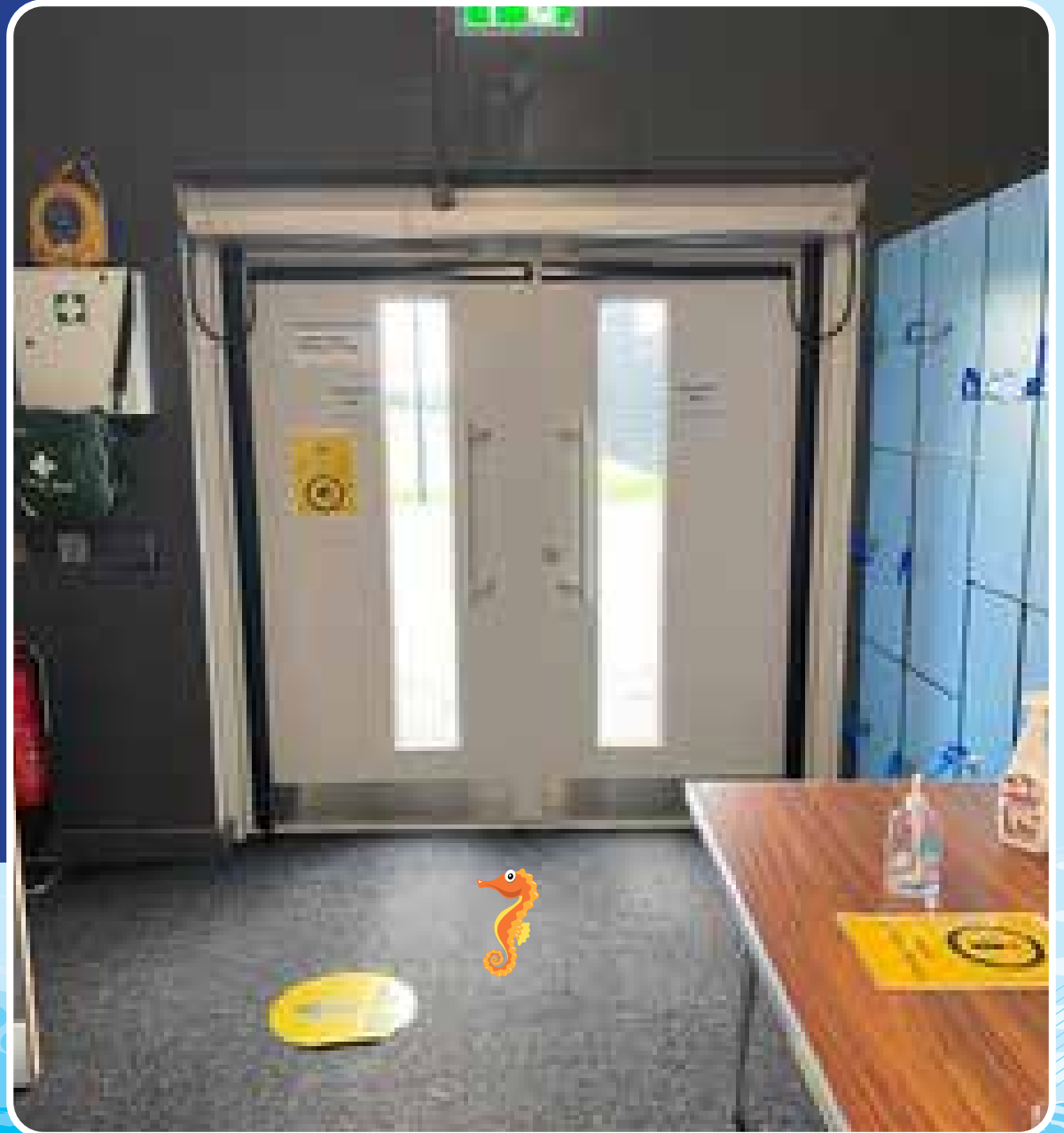
18

Nearly at the exit.



19

Exit here and turn  
left to follow the path  
to the carpark - See  
you soon Buddies!



# Meet the Swimming Buddies Team...



Sarah Jane



Coach Joel



Coach Pauline



Coach Zoe



Coach Emma



Coach Pamela



Coach Nicky



Coach Martina



Coach Sean



Coach Jenny



Coach Jonny



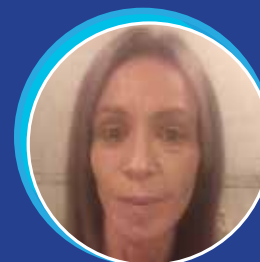
Coach Raymond



Coach Laura B



Coach Anna



Coach Laura R

